

# Shelby County Fire Department



# 2015 Annual Report

# Table of Contents

---

Page 2	Office of the Fire Chief / SCFD Achievements for 2015
Page 3	Letter From The Fire Chief
Page 4	Fire Station Territories and Addresses
Pages 5 & 6	Fire Department Organizational Chart
Pages 7 - 24	Engine Company Detail Summaries
Page 25	Battalions 21 & 22 Details
Page 26	Med Squad Details
Page 27	Specialized Response Apparatus
Page 28	SCFD Reserve Engine Fleet
Pages 29 & 30	Fire Fee Overview
Page 31	Department Administrative Staff
Page 32	Department Training Division
Pages 33 & 34	Department Communications & Dispatch Overview
Page 35	Department Emergency Medical Services
Page 36	Department Office of Fire Prevention
Page 37	Department Fire Explorer Program
Page 38	Star of Life Award Recipients <i>(also page 34)</i>
Page 39	Run Volume Statistical Summary
Page 40	Department Retirees During 2015

## The Office of the Shelby County Fire Chief

This office oversees every Division of the Shelby County Fire Department. With a staff of 169 uniformed and civilian employees, the SCFD is the second largest fire department here in Shelby County. The SCFD consists of nine engine companies that operate from eight county-owned stations (one engine company is co-housed with a City of Memphis engine company). Our first responders provide service to well more than 112,000 resident of un-incorporated Shelby County and Lakeland while our dispatchers answer the calls from more than 152,000 residents in those areas as well as Millington and Arlington. We have a primary area of responsibility that cover just over 281 of 753 square miles of Shelby County (35.8%). During 2015, we dispatched equipment and personnel to roughly 14,000 emergency calls - an average of one emergency every 38 minutes.



### SCFD Achievements - Calendar Year 2015

- ISO improved from Class 5/9 to Class 3/3X
- Ordered four (4) new Fire Trucks
- Purchased *Enabling Language Service Anywhere* (ELSA) devices to allow real-time language interpretation for 180 languages
- Restored EMS compliance of plus 90% for Unincorporated Shelby County
- Finished install of Mobile Data Terminals (MDTs) in response vehicles for improved response
- Created and distributed map books having unprecedented detail to Fire and EMS crews
- Helped initiate Automated External Defibrillator (AED) program for Shelby County government
- Achieved more training hours than ever in one year period as recognized by State of TN
- Achieved more fire related certifications in one year than in any other year
- Held live burn training exercise for the first time in more than 15 years
- 10 employees received the Star of Life Award by the State for exemplary life-saving EMS care
- Launched new website
- Launched new Facebook page
- Established new hiring register
- Refined the promotional process
- Raised preferred hiring qualifications to ensure better quality fire candidates
- Initiated and improved automatic aid response

## From The Fire Chief

The members of the Shelby County Fire Department are pleased to present the annual report for calendar year 2015. This report is a working document that highlights your fire department's activities and accomplishments. It is our aim to offer the highest level of service for the residents and visitors of Shelby County while honoring the established budget set forth by the Mayor as approved by the Shelby County Commission.

2015 was another good year for the department. Our highlights include an improved ISO rating (from Class 5/9 to Class 3/3x) and a restored ambulance response compliance to over 90%. We increased our social media presence, becoming more visible and accessible. A number of employees received awards and new employees were hired. The department experienced neither significant firefighter injuries nor civilian deaths. It was a good year.

As Fire Chief, I am privileged to lead a fire service organization comprised of such committed and skilled staff. The men and women of the Shelby County Fire Department are unwavering in their commitment to protect the lives and properties of the citizens and visitors of Shelby County. I hereby applaud and thank them for the work they do every day.

It is our goal to add value to the Shelby County community even beyond our core services. We strive to be good neighbors and community partners. We value stakeholder input and use it to inform decisions and to drive improvement. We too seek a better, stronger Shelby County.

Thank you for your trust and confidence as we continue to serve.  
I am especially honored to be your Fire Chief.

Yours in service,

**Alvin D. Benson**



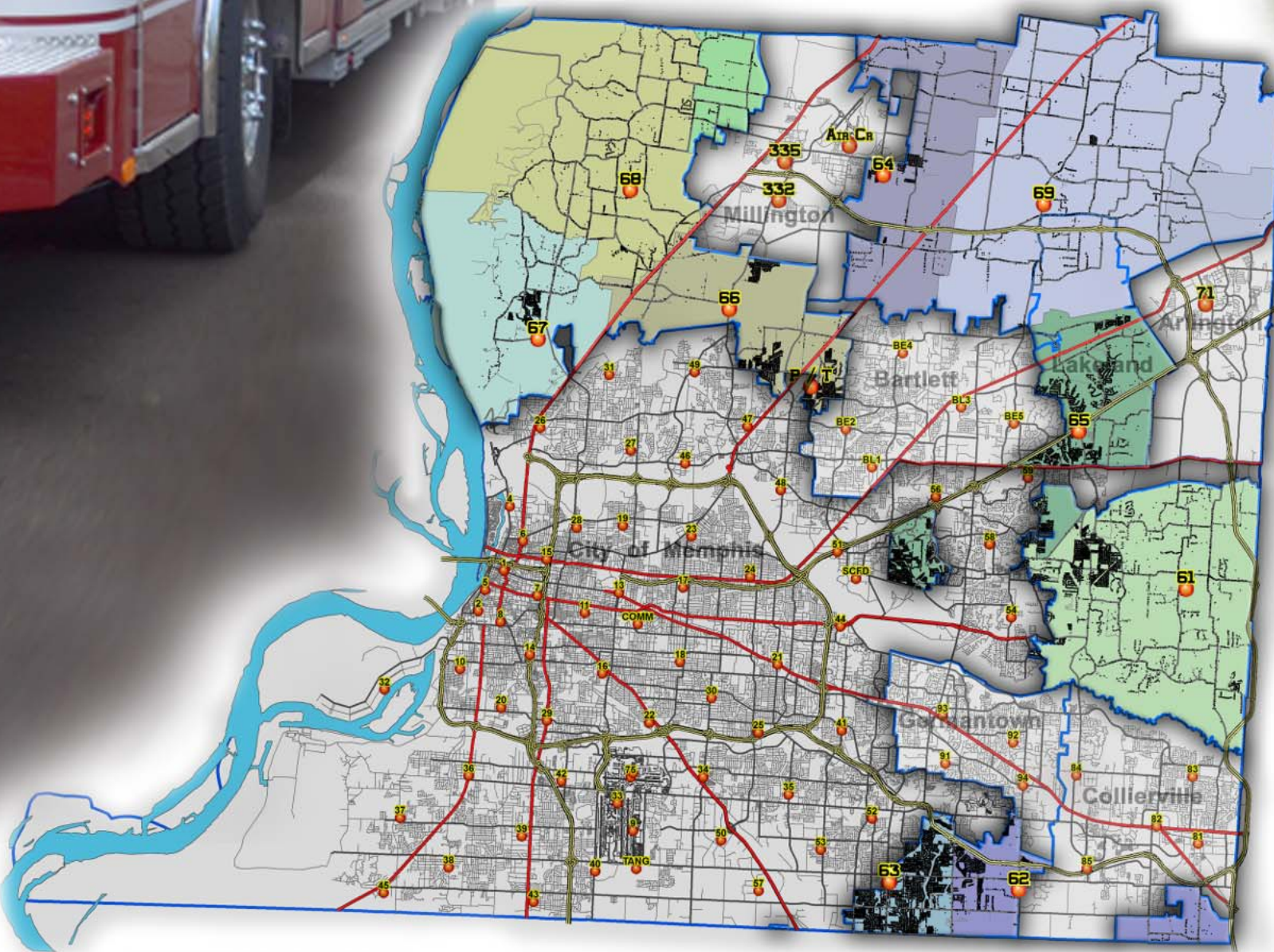
# Shelby County Fire Department Engine Company Response Districts

November 2015 (shaded areas are "first-in" for SCFD dispatching)



HEADQUARTERS = 1075 Mullins Station Rd. Memphis, TN 38134  
Mon-Fri 7am to 5pm 222-8010 / after hours 222-8000

- Engine 61 = 11611 Macon Rd. Eads, TN 38028
- Engine 62 = 4647 Forest Hill Irene Rd. Memphis, TN 38125
- Engine 63 = 4602 Riverdale Rd. Memphis, TN 38125
- Engine 64 = 6457 Navy Rd. Millington, TN 38053
- Engine 65 = 9774 Beverle Rivera Lakeland, TN 38002
- Rescue 66 = 5469 Raleigh Millington Rd. Millington, TN 38053
- Engine 67 = 944 Northaven Memphis, TN 38127
- Engine 68 = 2348 Garnett Millington, TN 38053
- Engine 69 = 7365 Brunswick Rd. TN 38002
- Prevention/Training = 5380 Egypt Central



**Electorate**

**Mayor**

**Chief  
Administrative  
Officer**

**Public Works  
Director**



# Fire Chief

PIO / Fire Fees      EMS Coordinator  
Accountant      H/R Admin Techs

## Deputy Fire Chief

## Administrative Division Chief

Fire / Medical Dispatch

Suppression

Communications  
Commander

Battalion  
21

Battalion  
22

Dispatch  
Supervisors

C.A.D.  
Coordinator

Engine 61  
Engine 62  
Engine 63  
Engine 65

Engine 64  
Rescue 66  
Engine 67  
Engine 68  
Engine 69

Dispatchers

Training

Quality Assurance

Apparatus Maintenance

Fire Investigations / Prevention

Fire Station Maintenance

Fire Inspections

Agency Liason

Logistics



# Shelby County Fire Department Engine District No. 61

Fisherville / Eads / Cordova

2015 Ferrara "Inferno" Pumper

Crew: 4 / Water: 750 Gal / Foam: 40 Gal

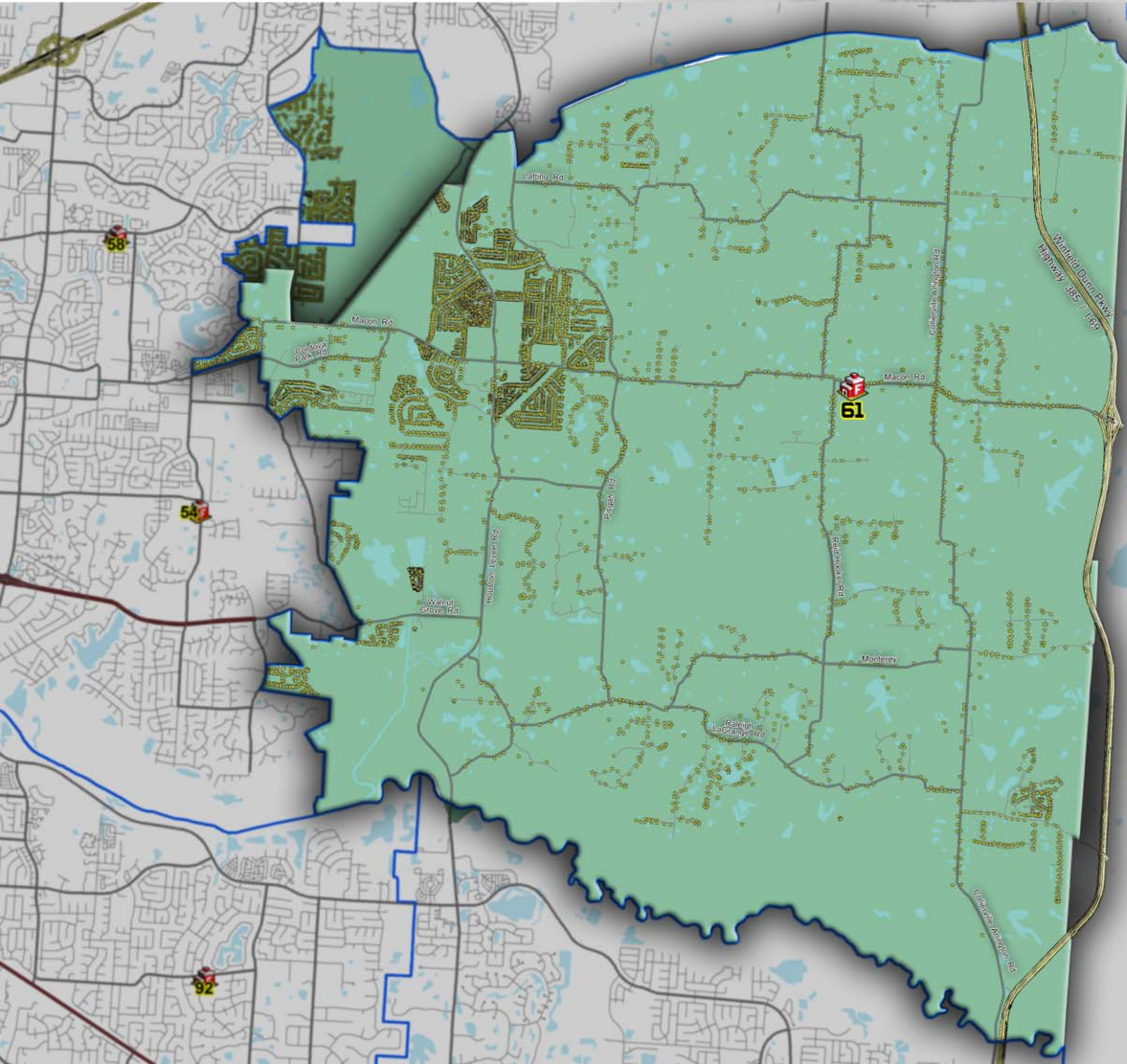
Hose Loads - 1,200 ft 5" / 800 ft 2.5" /

600 ft 1.75 attack / 100 ft 1"

Delivers up to 1,500 GPM

Territory: 42.9 Square Miles

6,946 Structures (Residential & Commercial)







# 2015 Responses

	Fire	Medical	Total
Engine 61	301	389	690
Brush Truck 61	80	29	109

## Additional Apparatus & Equipment Staged Here

Reserve Engine No. 76  
Ambulance Unit

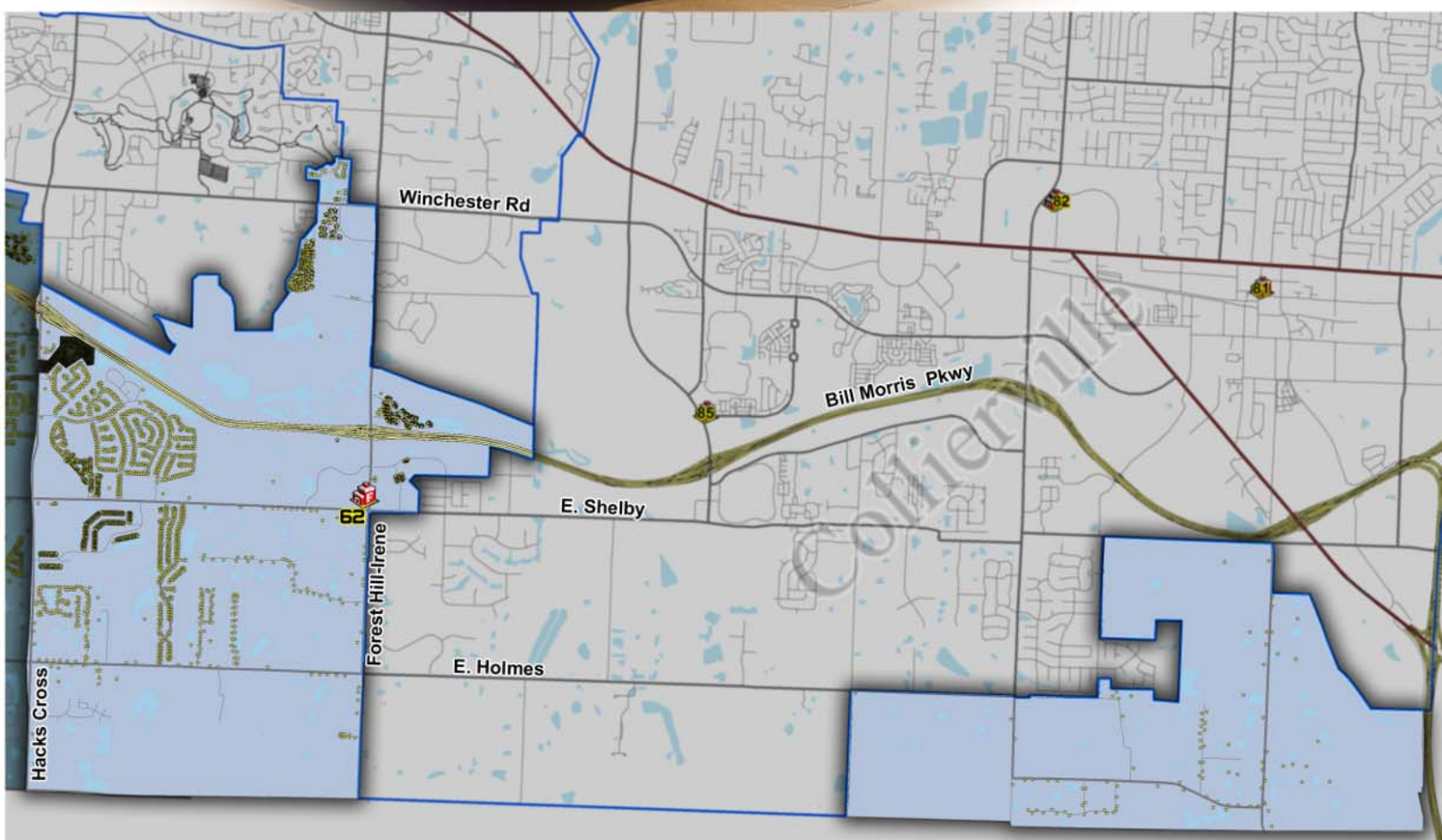


# Shelby County Fire Department Engine District No. 62

Southeast un-incorporated Shelby County

2006 Ferrara "Inferno" Quint  
Crew: 4 / Water: 315 Gal  
Ladder Extends to 107 feet  
Hose Loads - 1,200 ft 5" / 600 ft 2.5"  
450 ft 1.75 attack / 100 ft 1"  
Delivers up to 1,500 GPM

Territory: 10.8 Square Miles  
3,687 Structures (Residential & Commercial)



# 2015 Responses

	Fire	Medical	Total
Engine 62	446	233	679
Med Squad (brush truck) 2	183	1,270	1,453

## Additional Apparatus & Equipment Staged Here

Battalion 21

Reserve Battalion SUV

Ambulance Unit 620



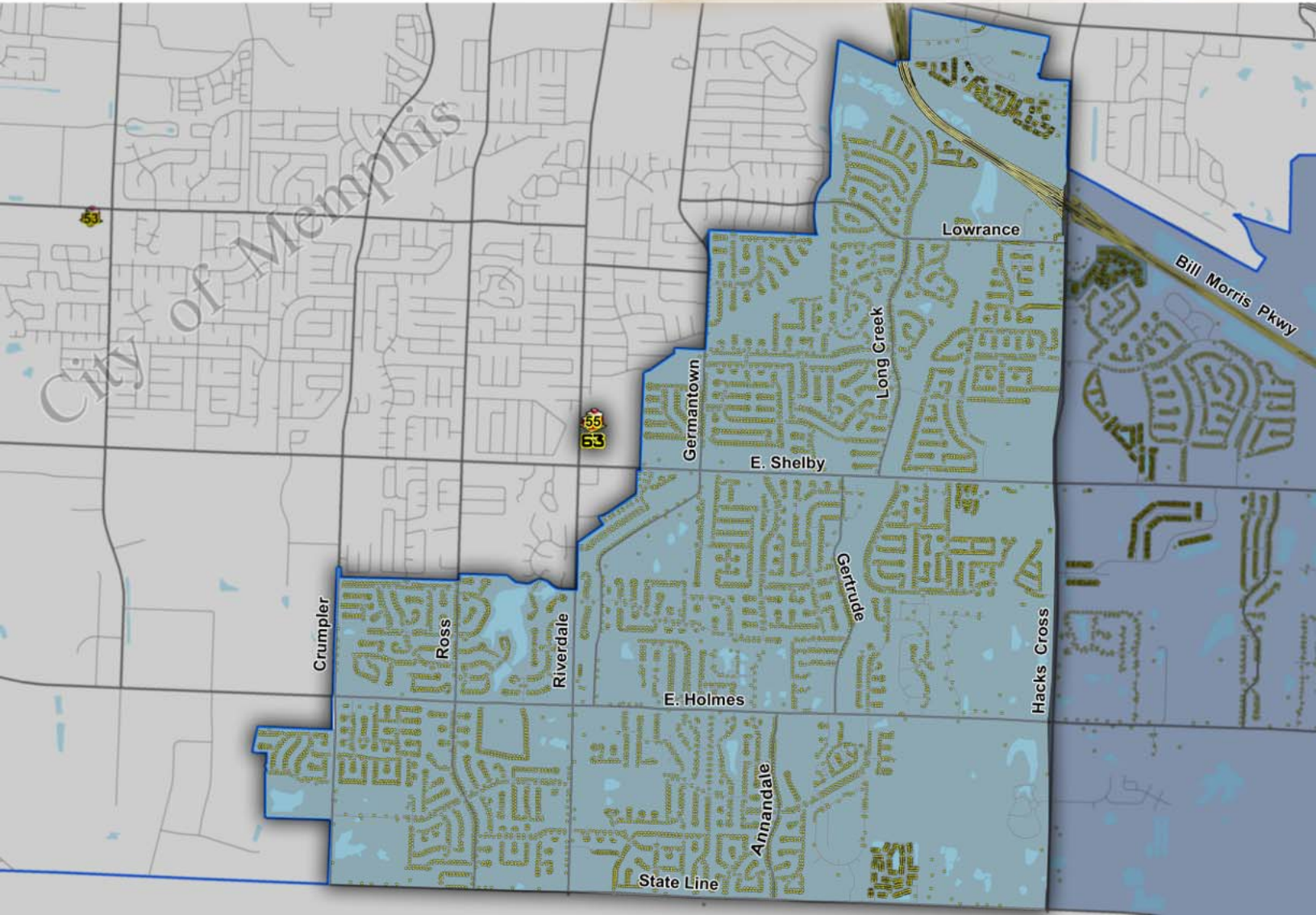


# Shelby County Fire Department Engine District No. 63

Southeast un-incorporated Shelby County

2009 Ferrara "Igniter" Pumper  
Crew: 4  
Water: 750 Gal / Foam: 30 Gal  
Hose Loads - 1,200 ft 5"  
600 ft 2.5" / 800 ft 1.75 attack  
Delivers up to 1,500 GPM

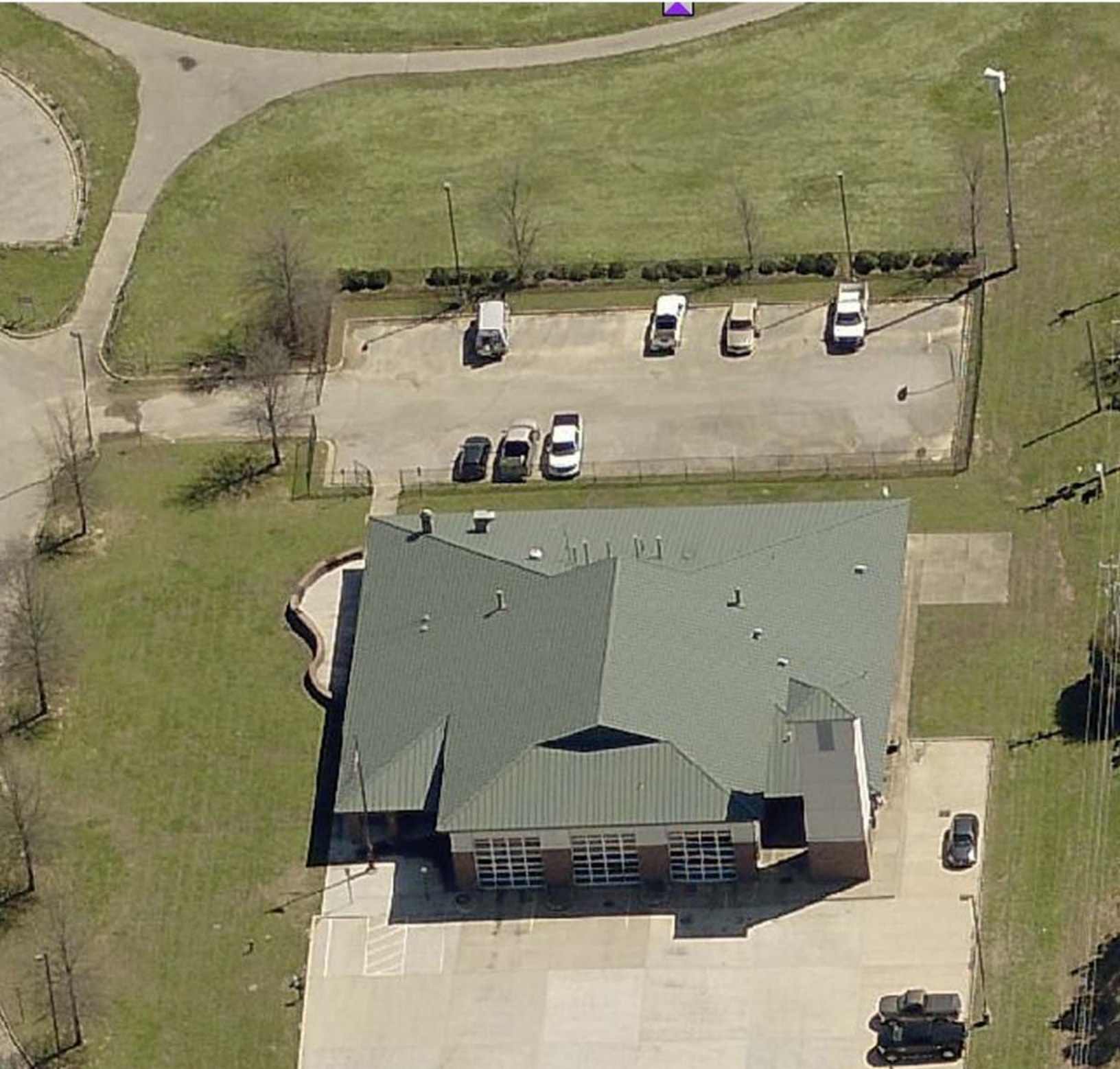
Territory: 7.4 Square Miles  
10,951 Structures  
(Residential & Commercial)



# 2015 Responses

	Fire	Medical	Total
Engine 63	685	295	980

*The number of medical calls for this engine company was reduced dramatically when "Med Squad 2" was introduced. Staged at Shelby County Fire Station 62 in the District just to the east, the "Squad" also responds into this Engine's territory with great efficacy.*

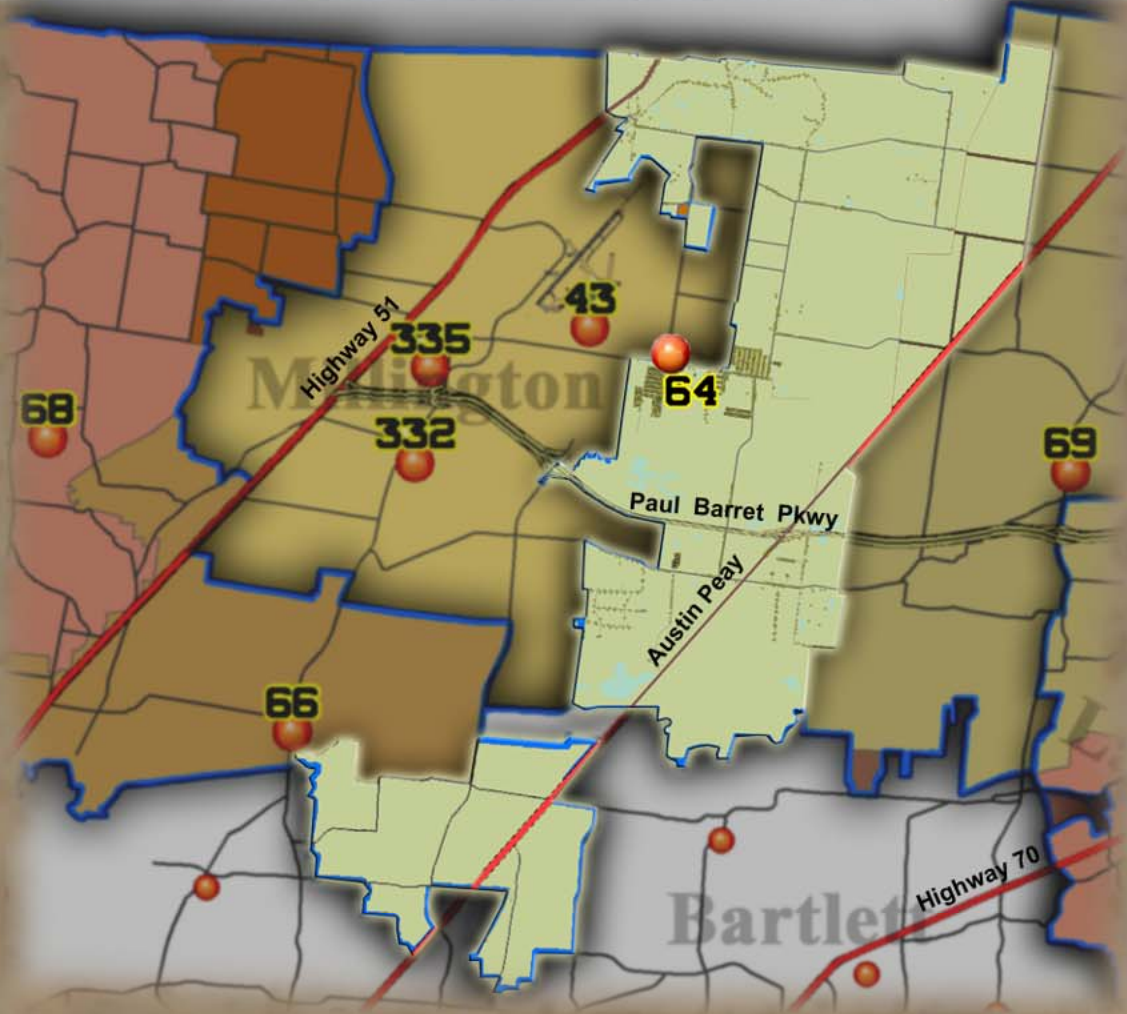


# Shelby County Fire Department Engine District No. 64 Between Millington & Arlington

2003 E-One "Typhoon" pumper  
Crew: 4  
Water: 750 Gal / Foam: 30 Gal  
Hose Loads - 1,200 ft 5"  
600 ft 2.5" / 800 ft 1.75 attack  
Delivers up to 1,500 GPM

Territory: 34.78 Square Miles  
5,291 Structures  
Residential & Commercial

*territory, structure and call data  
amended as territory re-alignments  
in November occurred.*



# 2015 Responses

	Fire	Medical	Total
Engine 64	199	498	697

*Combined data for both SCFD Station 64 and the former District 60 which was re-aligned in November 2015.*

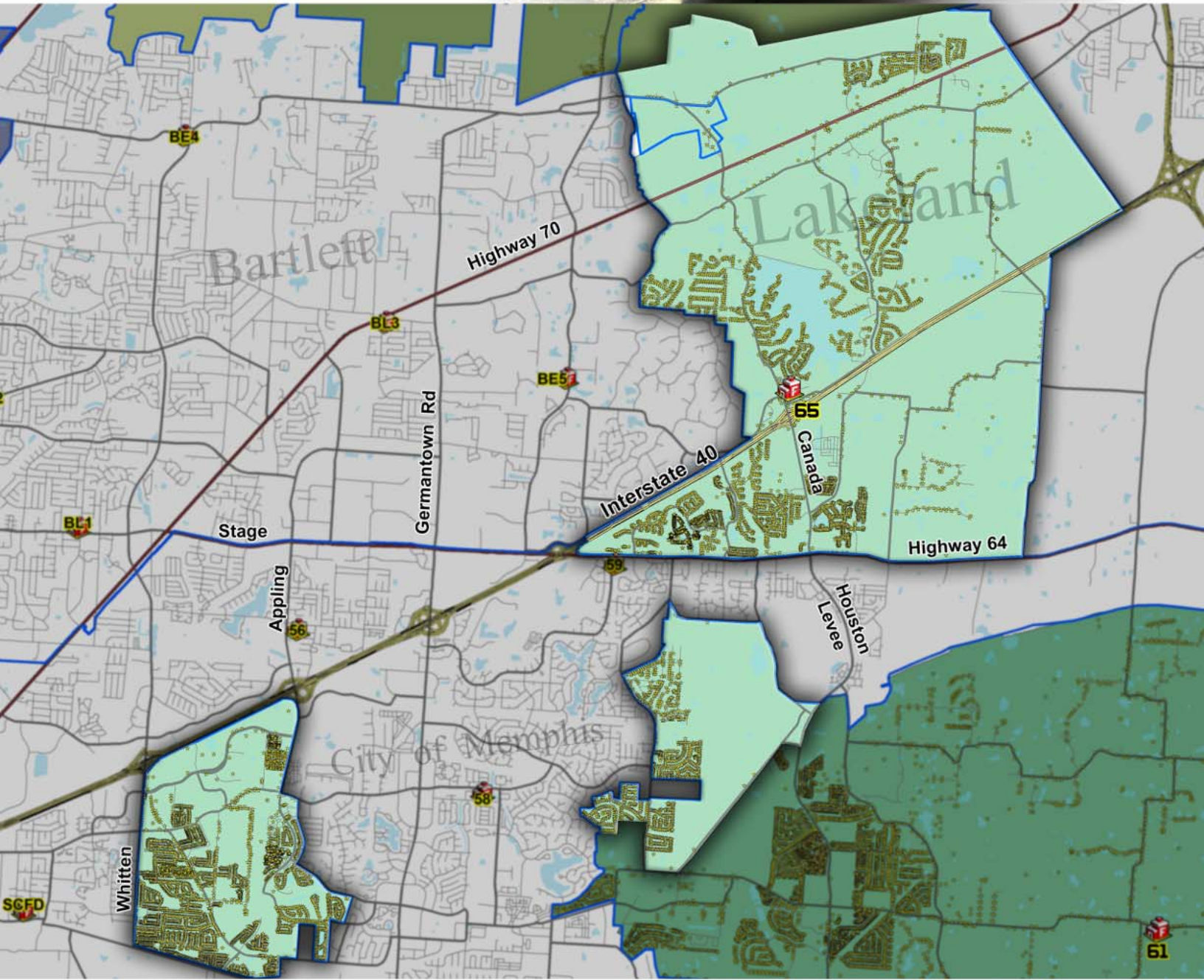


# Shelby County Fire Department Engine District No. 65

Lakeland, Cordova & Bridgewater

2013 Ferrara "Igniter" Quint  
Crew: 4 / Water: 400 Gal / 30 Gallons Foam  
Ladder Extends to 77 feet  
Hose Loads - 1,000 ft 5" / 800 ft 2.5"  
650 ft 1.75 attack / 200 ft 1"  
Delivers up to 1,500 GPM

Territory: 21.7 Square Miles  
10,582 Structures (Residential & Commercial)





# 2015 Responses

	Fire	Medical	Total
Engine 65	417	402	819
Med Squad (brush truck) 5	189	1,191	1,380

## Additional Apparatus & Equipment Staged Here

Reserve Engine No.76  
The Air Truck

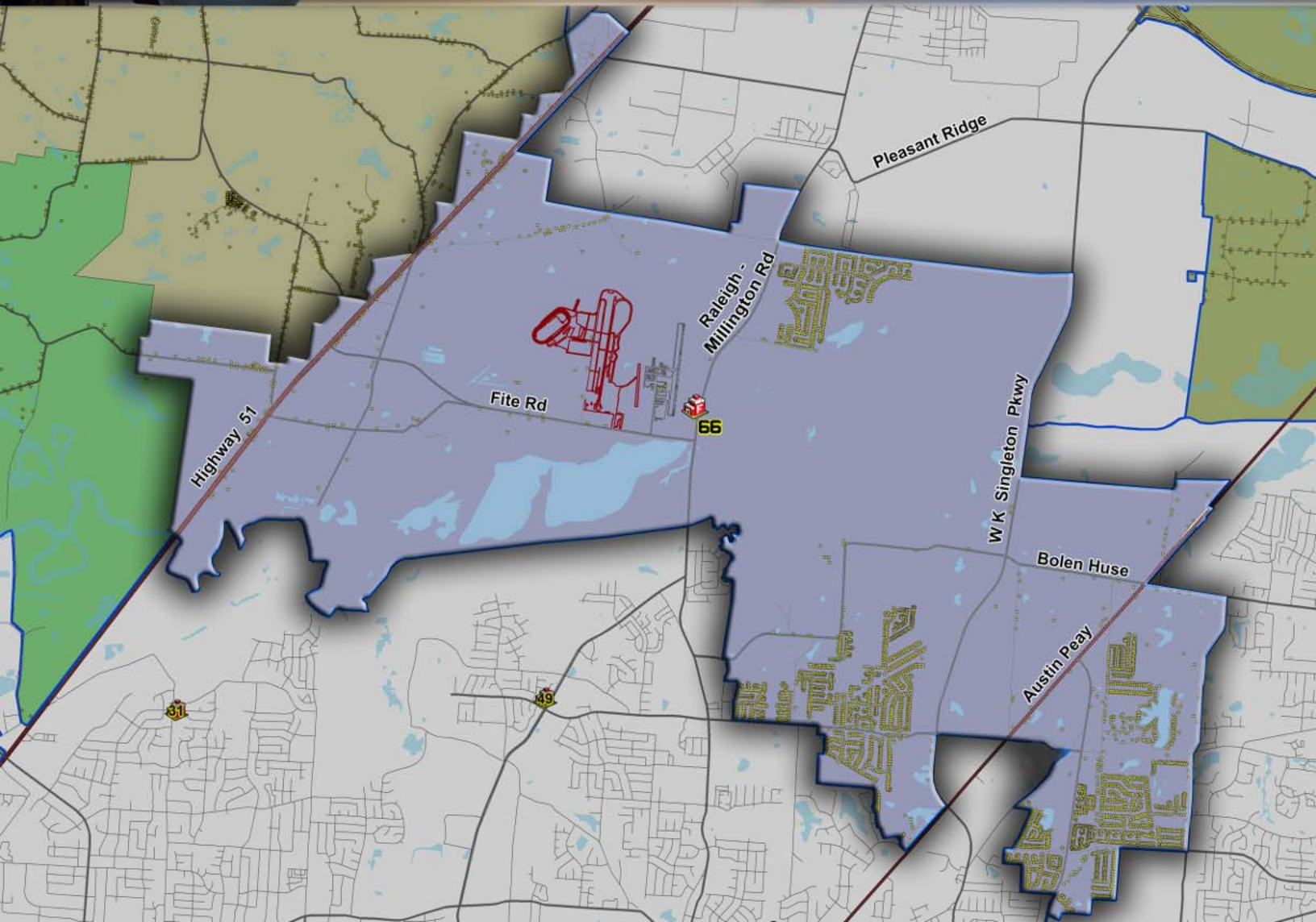


# Shelby County Fire Department Engine District No. 66

Fite Rd Industrial Corridor, Charles Baker Airport  
Northwood Hills & Waverly Farms, Spring Lake

2015 Ferrara "Inferno" Rescue Pumper  
Crew: 4 / Water: 750 Gal / Foam: 40 Gal  
Hose Loads - 1,200 ft 5" / 800 ft 2.5" /  
700 ft 1.75 attack / 100 ft 1"  
Delivers up to 1,500 GPM

Territory: 20.1 Square Miles  
4,780 Structures (Residential & Commercial)



The Shelby County Fire Department is equipped with a Special Operations Rescue Team that has been known as “Rescue 66” for almost twenty-five years now. This specially trained team is comprised of four personnel on each shift that have over 300 hours of technician level training each - in Rope Rescue, Confined Space Rescue, Structural Collapse Rescue, Trench Rescue and they are all Hazardous Materials Technicians.

This team is available twenty-four hours a day and always ready to respond anywhere within Shelby County. In the event that emergency agencies in our neighboring counties require the assistance of “Rescue 66”, then these fire fighters and apparatus will rapidly mobilize and head to any location requested in Fayette, Tipton, Lauderdale, De Soto (in Mississippi) and Crittenden (in Arkansas) to assist in any way required.

Also assigned to Rescue 66 is HAZMAT 1. This vehicle is equipped with the latest, most comprehensive detection and mitigation equipment in Hazardous Materials Response that you will find anywhere in the United States!



### 2015 Responses

	Fire	Medical	Total
Rescue 66	268	370	638
HazMat 1	16	5	21

### Additional Apparatus & Equipment Staged Here

- Battalion 22
- HazMat 1
- Decontamination Unit

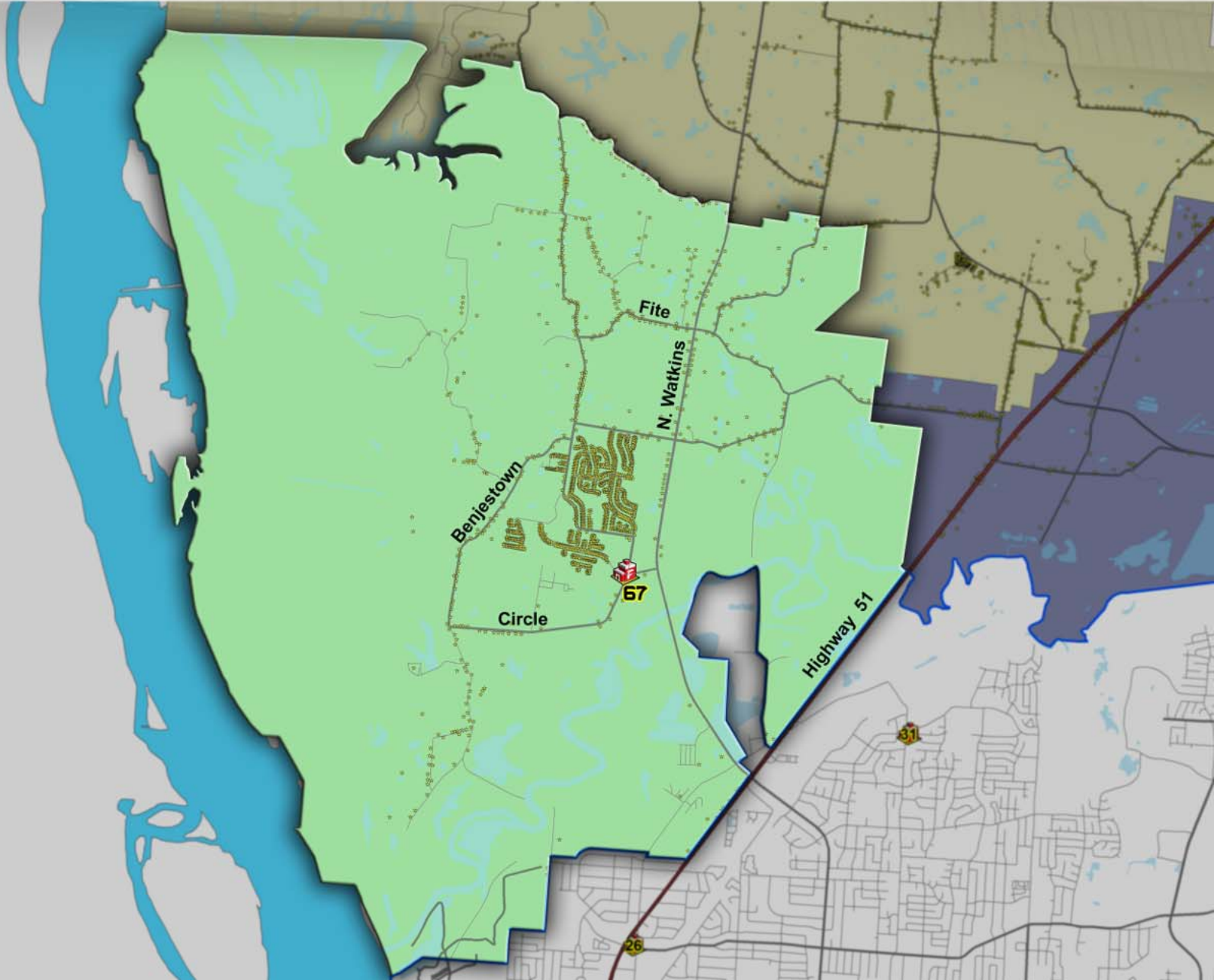
# Shelby County Fire Department Engine District No. 67

Northaven / South Shelby Forest



2015 Ferrara "Inferno" Pumper  
Crew: 4 / Water: 750 Gal / Foam: 40 Gal  
Hose Loads - 1,200 ft 5" / 800 ft 2.5" /  
550 ft 1.75 attack / 100 ft 1"  
Delivers up to 1,500 GPM

Territory: 28.2 Square Miles  
1,693 Structures (Residential & Commercial)



# 2015 Responses

	Fire	Medical	Total
Engine 67	144	456	600
Brush Truck 67	53	20	73

## Additional Apparatus & Equipment Staged Here

Reserve Engine 66  
Rescue 6 Hydratrek  
Mass Casualty Unit  
Reserve Engine 78  
Ambulance Unit 615



# Shelby County Fire Department Engine District No. 68 North Shelby Forest

2015 Ferrara "Inferno" Pumper  
Crew: 4 / Water: 750 Gal / Foam: 40 Gal  
Hose Loads - 1,200 ft 5" / 800 ft 2.5" /  
650 ft 1.75 attack / 200 ft 1"  
Delivers up to 1,500 GPM

Territory: 48.4 Square Miles  
1,704 Structures  
(Residential & Commercial)



# 2015 Responses

	Fire	Medical	Total
Engine 68	133	254	387
Brush Truck 68	51	4	55

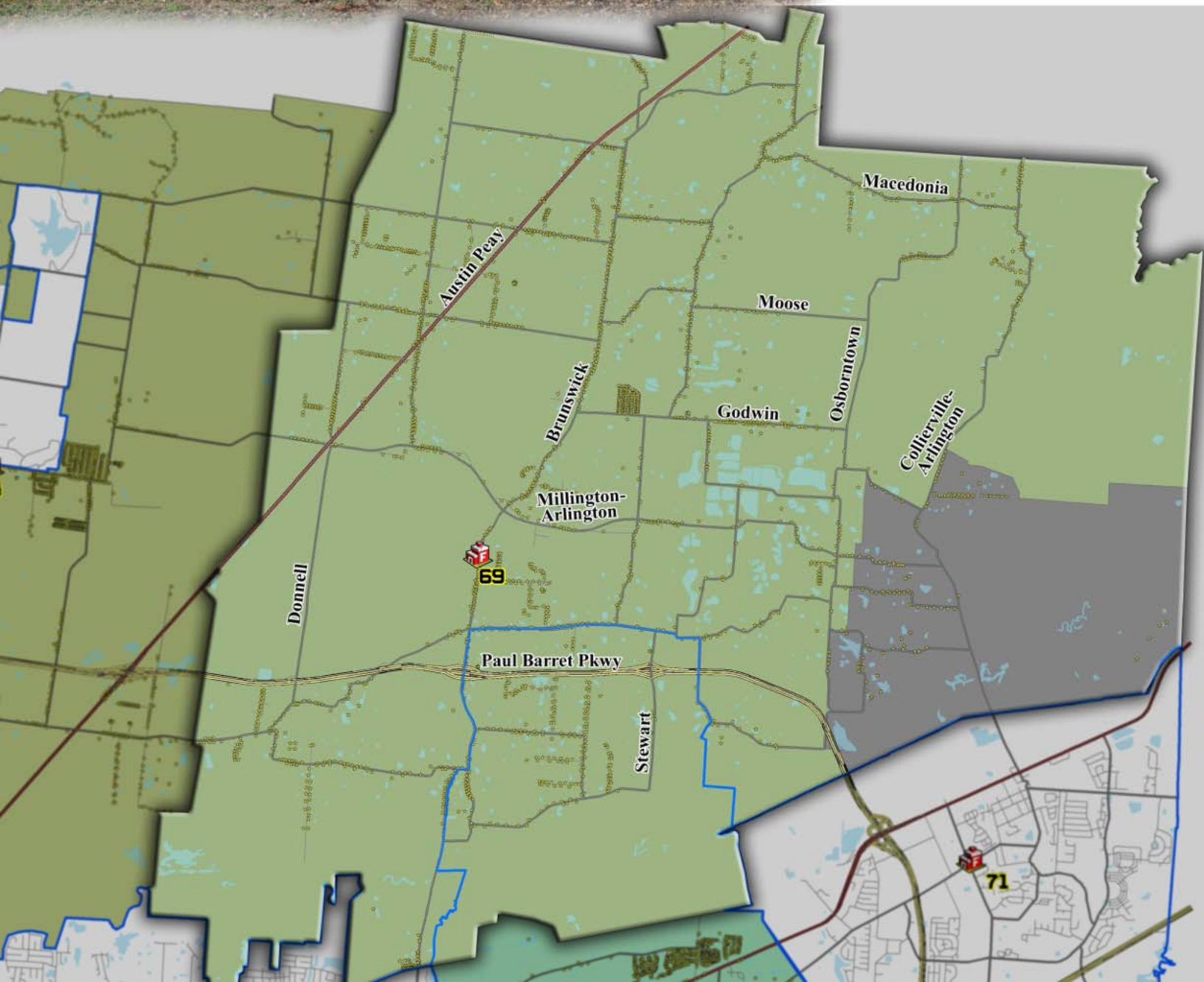


# Shelby County Fire Department Engine District No. 69

Bolton, Rosemark,  
Northeast Shelby County

2010 Ferrara "Igniter" Pumper  
Crew: 4 / Water: 850 Gal / Foam: 40 Gal  
Hose Loads - 1,200 ft 5" / 600 ft 2.5"  
300 ft 1.75 attack / 100 ft 1"  
Delivers up to 1,500 GPM

Territory: 70.7 Square Miles  
2,056 Structures  
(Residential & Commercial)





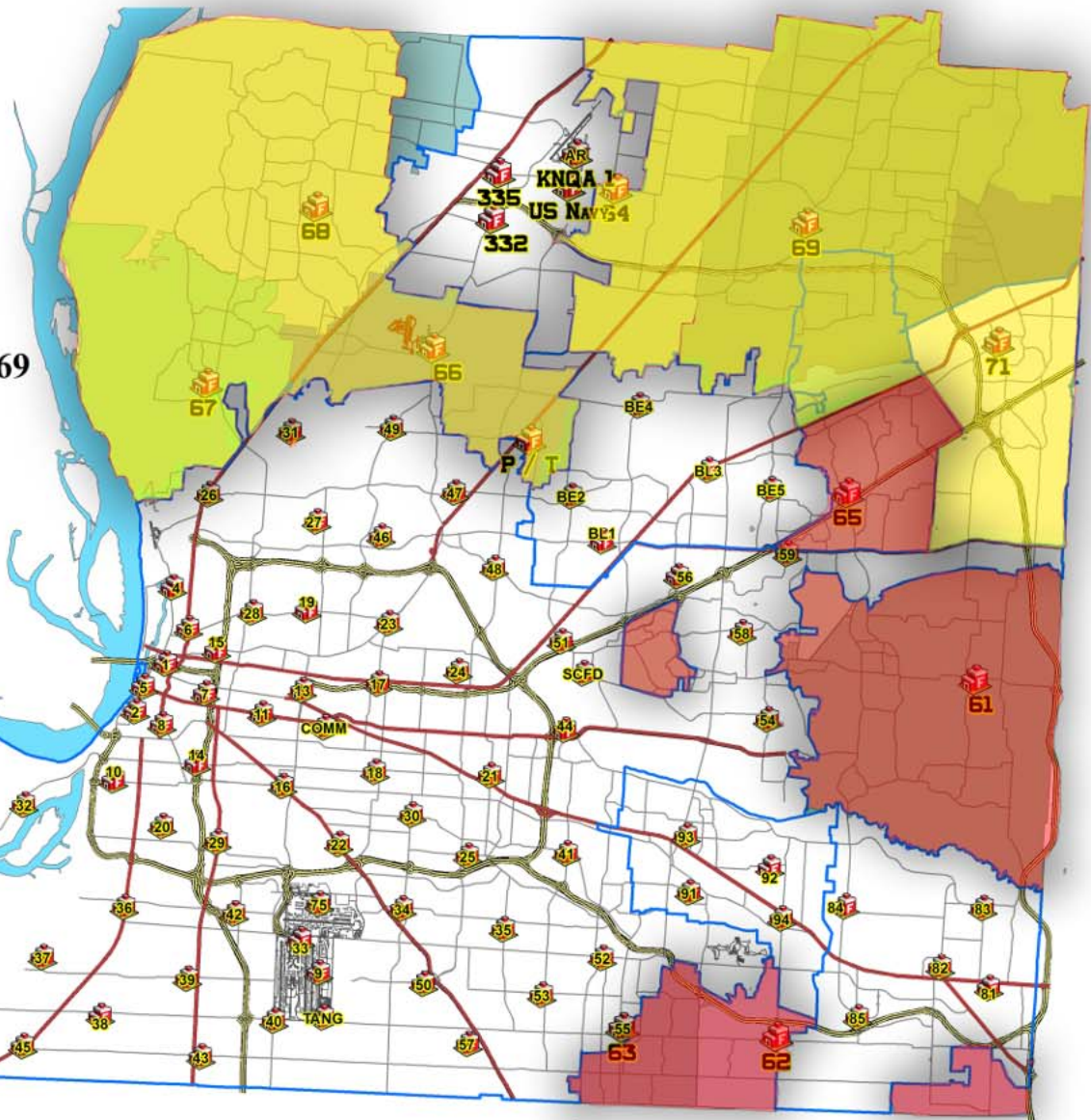
# 2015 Responses

	Fire	Medical	Total
Engine 69	170	328	498
Brush Truck 68	53	3	56



**Battalion 22**  
Stations 64, 66, 67, 68, & 69

**Battalion 21**  
Stations 61, 62, 63 & 65



Apparatus	Fires	Med Calls	Total
Battalion 22	286	86	372
Battalion 21	331	95	426
	<b>617</b>	<b>181</b>	<b>798</b>

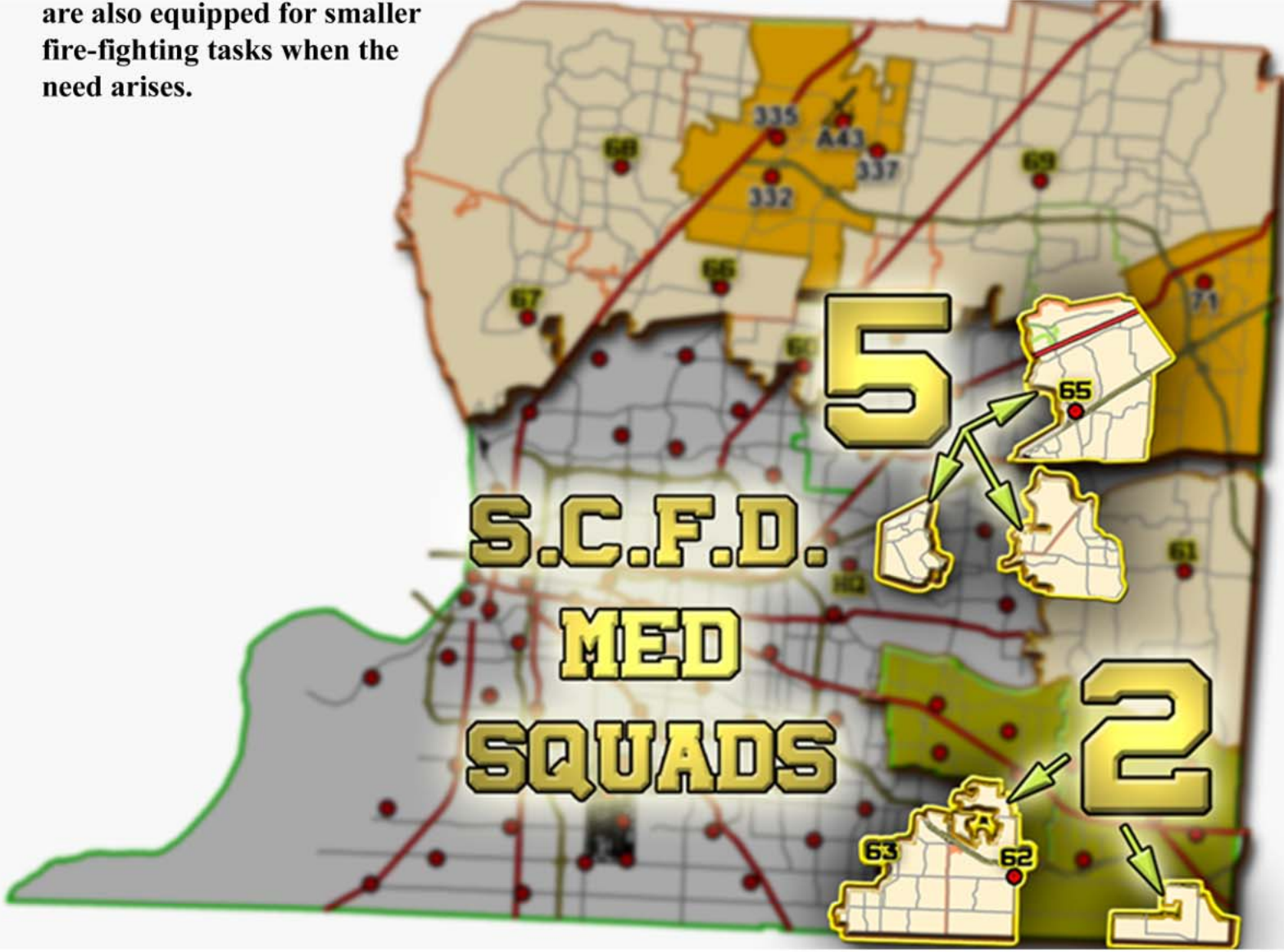
SCFD Battalion Chief vehicles are 2015 Ford Interceptor SUVs. Battalion 21 primarily covers the highlighted red areas while Battalion 22's areas are highlighted in amber.

Three additional Interceptors are utilized by Headquarters staff. They are the Deputy Fire Chief, Division Chief & EMS Coordinator





The addition of a “Med Squad” is an advantageous way to improve responses to emergency medical calls. These are vehicles that are much smaller than a full-sized fire engine and are staffed by at least a Paramedic for Advanced Life Support who is driven by an Emergency Medical Technician to scenes in areas of higher call saturations. Although a “Med Squad” responds from a particular station, they also run in multiple engine districts. These vehicles are also equipped for smaller fire-fighting tasks when the need arises.



### “Air Truck”

A utility-styled cargo van on a one-ton chassis. This vehicle is equipped with a large on-board high pressure cascade air system that is capable of filling approximately fifty air bottles. This unit also carries thirty self-contained breathing apparatus bottles and is also used to haul trailers of various types to emergency scenes.



### “The HydraTrek” aka Rescue 6

A tracked, amphibious, all-terrain vehicle equipped for light rescue operations. Known as “Rescue 6”, this very unique vehicle can be deployed to virtually any environment that is too difficult for walking or ingress by the traditional “A.T.V.’s” that are so common these days. The HydraTrek has wheels, tracks, water propellers, a stretcher mount, lighting and a winch. It can operate in streams, ponds and lakes with a crew of four rescuers.



### “Rescue 667”

This all terrain, four wheel drive, light utility, off road vehicle enhances the ability of the Shelby County Fire Department to successfully deploy rescue personnel with their important equipment to rural areas that are often deep into woodlands and well off paved roadway surfaces. As the attraction to our natural areas here in Shelby County rises, so to does our need to effectively react with equipment that can get to our residents if they find themselves in trouble.



### “DeCon Trailer”

In the event of industrial, accidental, or intentional contamination by toxic, infective, caustic, polluted, or otherwise unhealthful or damaging substances, it would be necessary to decontaminate people, clothes and equipment to remove harmful nuclear, biological, or chemical (NBC) agents. Since these events can happen anywhere at any time, then the need for the tools and supplies that are required to mitigate such an event must be mobile. The SCFD maintains a high state of readiness with this equipment in both its stocks and training.



### “Mass Casualty Response”

Our complex post 9-11 country raises many challenges for First Responders. Among them would be worst case emergencies where responding agencies might rapidly become overwhelmed. One of the tools relied upon by the SCFD is the Mass Casualty Response trailer. It houses the critically important equipment and supplies needed to properly handle catastrophies mitigation. Being mobile as well, this piece can respond to events ranging from man-made to natural large-scale emergencies where there are many casualties.





Reserve 65 - 1996 Smeal Spartan 750 Gal Water



Reserve 66 - 2008 Ferrara Intruder II 750 Gal Water



Reserve 67 - 1997 Smeal Spartan Quint  
75 ft Aerial 400 Gal Water



Reserve 68 - 2003 E-One Typhoon 800 Gal Water

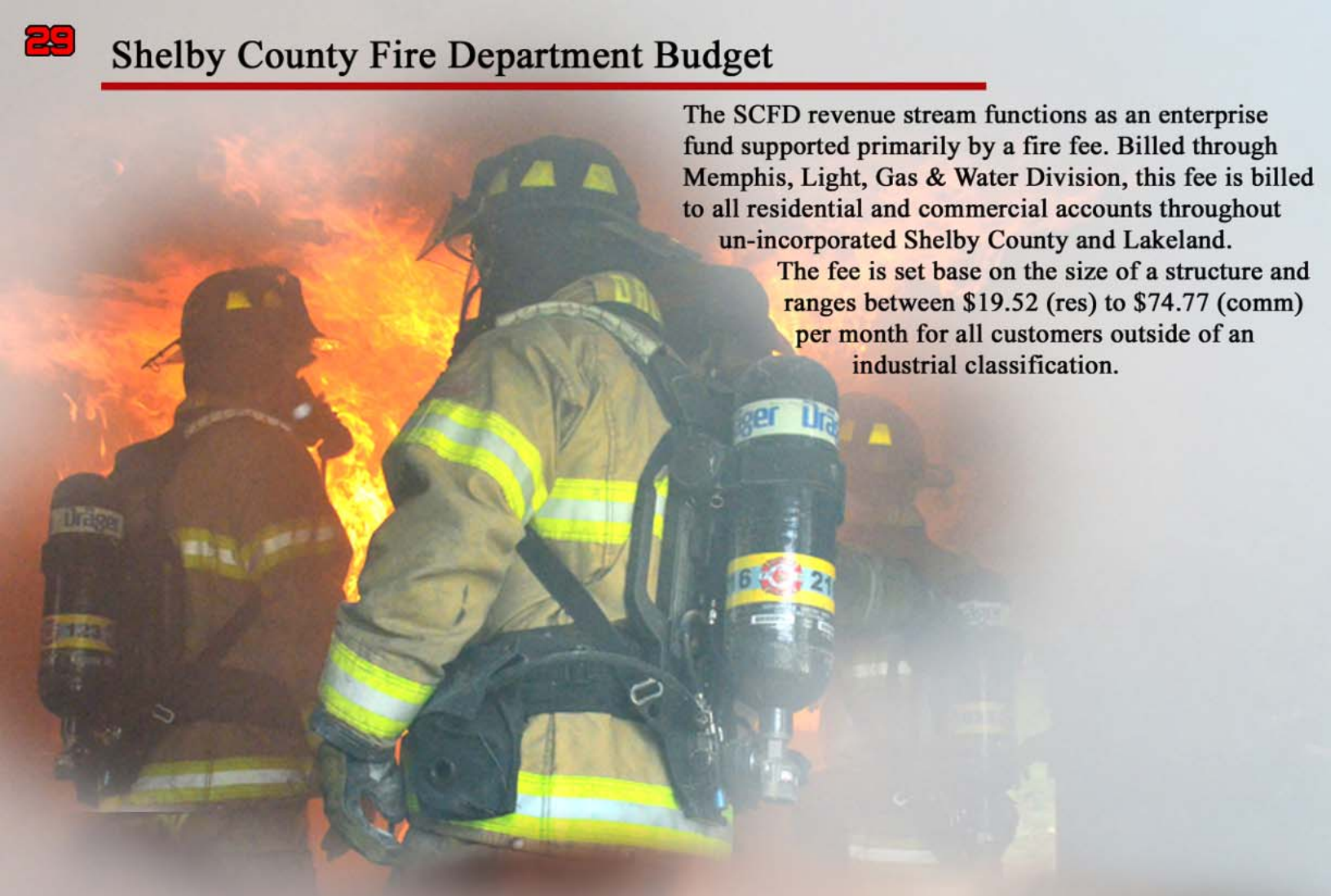


Reserve 76 - 1995 Smeal Spartan 750 Gal Water



Reserve 78 - 1995 Pierce Navistar 500 Gal Water

# 29 Shelby County Fire Department Budget




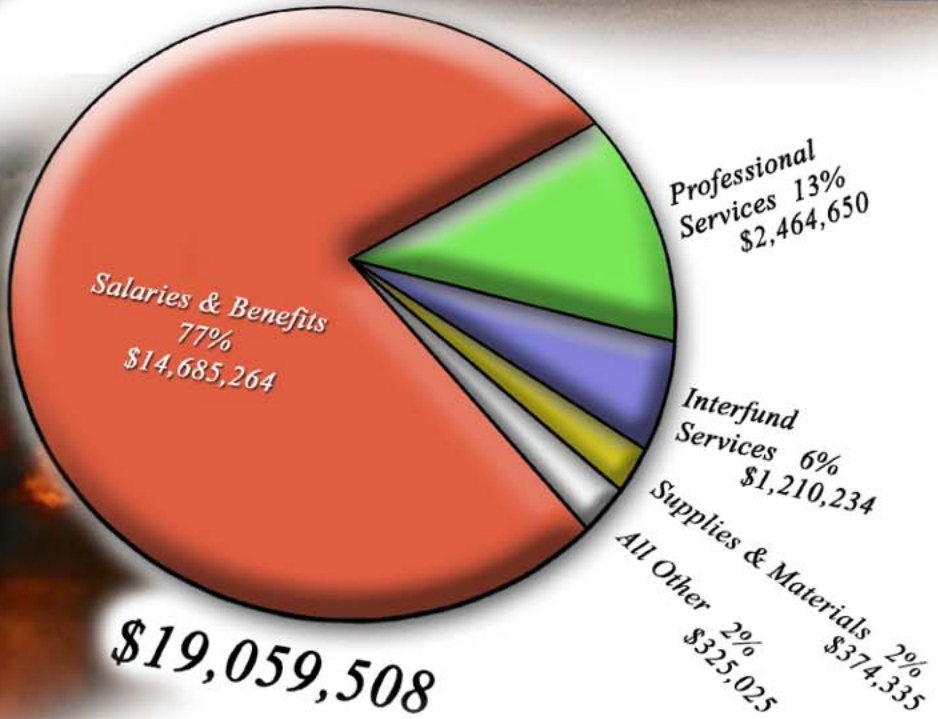
The SCFD revenue stream functions as an enterprise fund supported primarily by a fire fee. Billed through Memphis, Light, Gas & Water Division, this fee is billed to all residential and commercial accounts throughout un-incorporated Shelby County and Lakeland.

The fee is set base on the size of a structure and ranges between \$19.52 (res) to \$74.77 (comm) per month for all customers outside of an industrial classification.

MLG&W provides a billing environment for every customer which is a very effective cost-savings initiative because the SCFD can take advantage of a database that already exists and apply the proper rate to an account without having to endure the cost of additional personnel to operate a stand alone billing department. The result is more firefighters on engines.

In 2015, the SCFD employed a budget of \$19,059,508.00, of which 94% was comprised of fire fee revenues. The remaining revenue was from construction, burn, industrial, hazardous materials and inspection permit fees.





# Shelby County Fire Department Administration



**Alvin D. Benson**  
Fire Chief



**Glen F. Kneeland**  
Deputy Fire Chief



**Tracy Brown**  
Logistics



**Donald Fletcher**  
EMS Coordinator



**Sandra Hughes**  
Accountant



**Brent Perkins**  
Public Information  
Fire Fees / Mapping



**Erica Sims**  
Leave Tech.



**Myra Stroud**  
Payroll / H.R.



**Sheila Towns**  
Admin. Tech.





## Shelby County Fire Department Training Division

Ronald Benson and William Mattix - Training Officers

The Shelby County Fire Department Training Division is responsible for making sure all fire personnel receive required annual training and re-certification. Training is broken down into different categories which allows us to schedule all of our personnel more effectively.

For the first three months of each year, the Training Division is responsible for the State Incentive Pay Program. Once that has been satisfied, we enter EMS Instruction to allow our EMTs and Paramedics to obtain continuing education hours for re-certification.

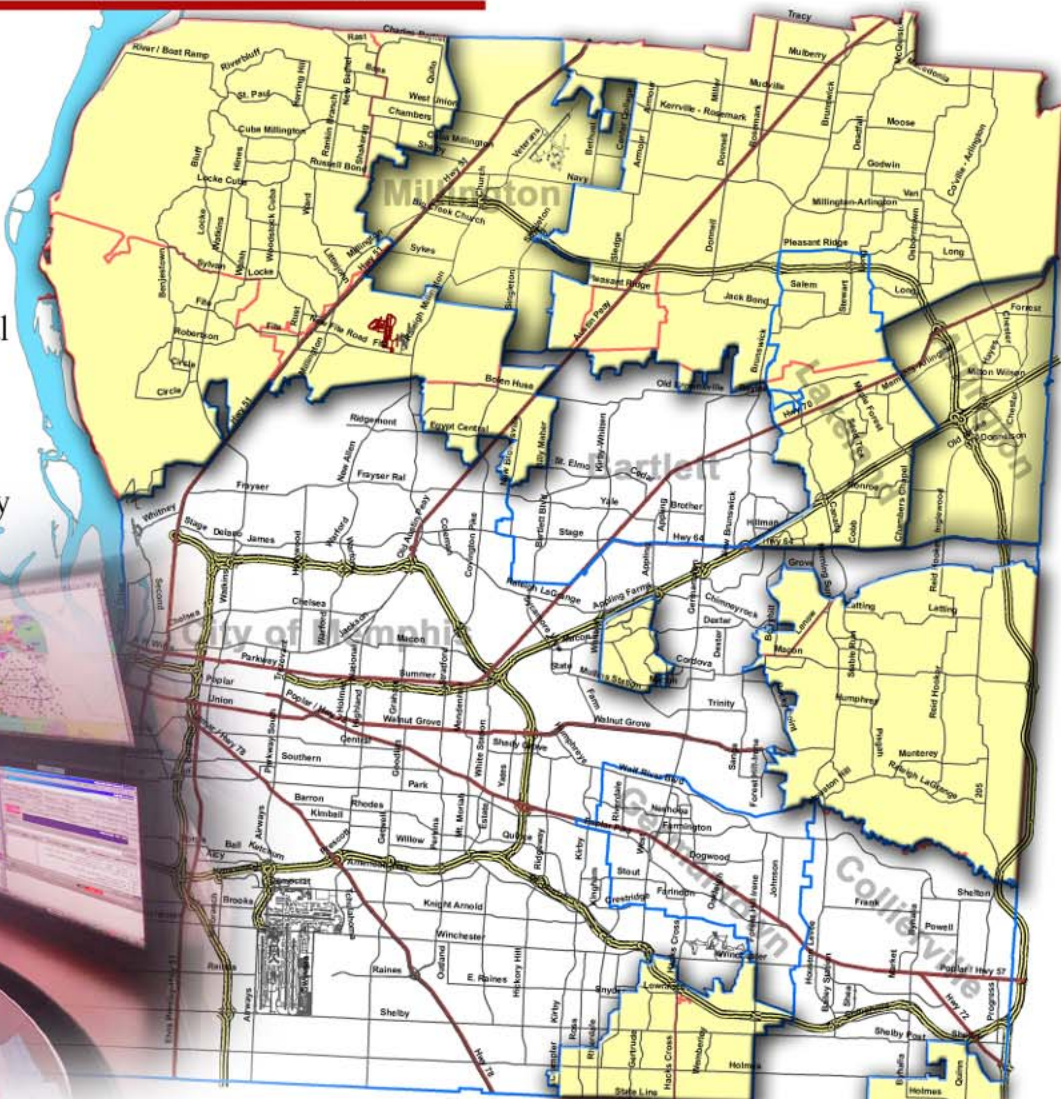
When the Shelby County Fire Department hires new employees for fire fighting, the Training Division is responsible for certifying them as fire fighters through the latest training classes. Finally, we must stay in communication with agencies such as TEMA, State Fire Commission, and Southwest Tennessee Community College to remain current on the very latest in technology and enhancements to our industry.



The Shelby County Fire Department is responsible for all fire and medical emergency dispatches for more than 43% of the geographical area of Shelby County, TN.

This represents every fire and medical emergency outside of Memphis City, Bartlett, Germantown & Collierville.

On average that reflects an emergency dispatch almost every 40 minutes.



With a call saturation of almost 14,000 annual dispatches, the SCFD processes emergency requests from a huge portion of the population of Shelby County. In all, that is more than 150,000 night-time residents and many more during day time hours. During the spring of 2013, this office became only the 172nd dispatch environment in the world to be accredited by the International Association of Emergency Dispatch. To put that into perspective, there are 5,899 Primary Service Answering Points (PSAPs) in America alone! This was a huge accomplishment.

In order to assure the most effective response, the SCFD utilizes the latest technology to deploy its engine companies and personnel. Our computer-aided dispatch environment provides real-time satellite tracking of the engine & ambulance fleet. Bottom line? If you know where they are, you can route them faster with higher levels of safety.

Also, one of the largest databases assures that useful, comprehensive information is automatically displayed to the dispatcher while being sent to the responding apparatus as well.

Also, to assure that improvements to the system remain on par with some of the best in the United States, we have been immersed in a complete upgrade to our dispatch center. We are focusing on enhanced, next-generation 9-1-1. During the summer of 2016 the SCFD will roll out the most powerful computer-aided dispatch in the region.





Nearly 14,000 times per year, these communications specialists key up transmitters to dispatch equipment and personnel to emergencies throughout our region.

The primary agencies that rely upon these skilled professionals are: The Shelby County Fire Department (which also covers Lakeland), Millington Fire Department, Arlington Fire Department and the Shelby County Office of Preparedness.

*Please refer to the highlighted regions in the map on the previous page.*

 <b>Brenda Harper</b> Quality Assurance	 <b>Roberta Ivory</b> Communications Commander		
 <b>Corey Howard</b> CAD Supervisor	 <b>Keshia Johnson</b> Dispatch Supervisor	 <b>Samantha Wherry</b> Dispatch Supervisor	 <b>Kathy Strickland</b> Dispatch Supervisor / CTO
 <b>Shironda Stepney</b> Dispatcher	 <b>Bridgett Banks</b> Dispatcher	 <b>Barbara Polascak</b> Dispatcher	 <b>Candace Hadley</b> Dispatcher
 <b>Kevin Lackey</b> Dispatcher	 <b>Chelsey Allen</b> Dispatcher Trainee	 <b>Sherry Thompson</b> Dispatcher / CTO	 <b>Dennis Lewis</b> Dispatcher / CTO
 <b>LeShae Fox</b> Dispatcher	 <b>Michelle Staten</b> Dispatcher		

*For their dedication and assistance during a very dramatic and emotional emergency, SCFD Dispatchers Candace Hadley and Sherry Thompson received the Star of Life Award. They had played a very significant part in the saving of the life of a Shelby County resident who had no pulse and was not breathing. While directing emergency crews to the scene, they also had the responsibility of instructing the caller on how to properly render CPR until fire and EMS crews arrived to take over. The heart attack victim was able to later have her photograph taken with some of those who made sure that she would remain alive! Every SCFD dispatcher is trained to provide this type of specialized service.*



# E.M.S.



## Emergency Medical Services Donald F. Fletcher, EMS Coordinator

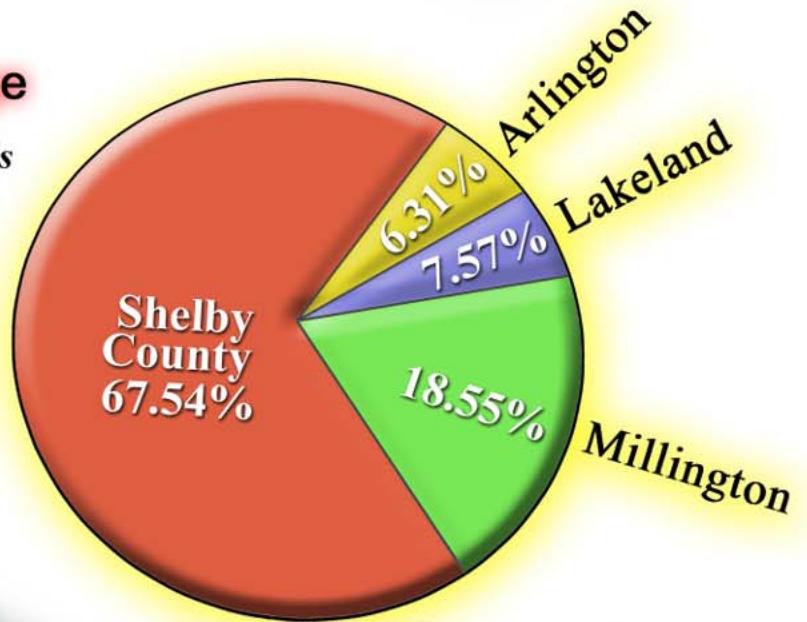
Here at the Shelby County Fire Department every one of our nine engine companies is equipped as and Advanced Life Support (ALS) engine company. This means that there is no level of patient care considered to be higher than an ALS engine. Aboard that apparatus, are Paramedics, life saving drugs and equipment that only a Paramedic is certified to deploy. The SCFD has 31 Firefighter/Paramedics. There are an additional 17 Emergency Medical Responders and 85 Emergency Medical Technicians, all assigned to engine companies as fire fighters throughout our response areas.

American Medical Response (AMR) is the current contracted ambulance provider for the Shelby County Fire Department. A.M.R. provides multiple Advanced Life Support (ALS) units for our primary response regions as well as the municipalities of Millington, Arlington and Lakeland.

During 2015, AMR ambulances and crews responded to 10,017 calls for help in these areas. All dispatching for them is handled by the Shelby County Fire Department communications division.

### Ambulance Usage

	<i>Total Calls</i>	<i>/</i>	<i>% of Calls</i>
<i>Arlington</i>	<i>633</i>	<i>/</i>	<i>6.31%</i>
<i>Lakeland</i>	<i>759</i>	<i>/</i>	<i>7.57%</i>
<i>Millington</i>	<i>1,859</i>	<i>/</i>	<i>18.55%</i>
<i>Shelby County</i>	<i>6,766</i>	<i>/</i>	<i>67.54%</i>
	<b>10,017</b>		<b>emergencies</b>



# Shelby County Fire Department

## Fire Prevention

The Fire Prevention Bureau manages five important functions which include: fire inspections, plan reviews, public and private education, fire investigations & hydrant maintenance. The main objective of the Fire Prevention Bureau is to promote prevention and awareness through a proactive approach to fire and life-safety.



**Jake Haley**  
Fire Marshal

**Terry Watts**  
Fire Inspector

The goal of the Fire Investigation Program is to provide an adequate, effective and efficient program directed toward identification of the cause and origin of fires and explosions, and to continue to train to serve the needs of the Shelby County Fire Department and the community effectively.

During 2015...

560 Annual Inspections conducted

130 Use and Occupancy/ Licensing Inspections

38 Public Education Events or training -  
with over 8,400 contacts

42 Fires Investigated

0 Fire Fatalities

5 burn related injuries

61 Fire hydrants turned in for repair





Fire Exploring is a program that the Shelby County Fire Department has been quite proud to host for more than a decade now. In association with the Boy Scouts of America, the program is open to young men and women between the ages of 14 and 21 who have a sincere interest in the fire services as a career goal.

The SCFD is currently the only fire department in the region with a program that will allow a certified explorer scout the opportunity to work a partial shift with fire fighters and observe actual responses to calls while riding aboard a fire engine. This only happens after the explorer has demonstrated a level of dedication, maturity and merits through maintaining good grades in their school studies.

Many of these young people have been successful in becoming full time career fire fighters and emergency medical professionals. To date there have been more than two dozen who have had their start here.

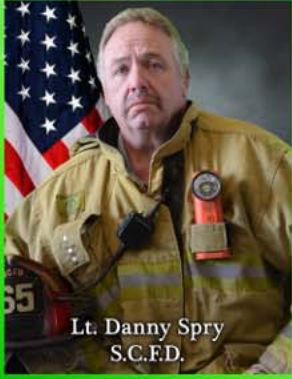
The Shelby County Fire Department Explorer Post has been under the direction of SCFD PIO Brent Perkins since its beginnings. Among bragging rights for many recognitions and successes, the program has also produced recipients of the Tennessee Governor's Volunteer Star Awards in Nashville for the last three years running!

The history of this post is rooted in the number emblazoned on the Maltese "343". Every Explorer learns the significance of this when remembering the Fallen New York City Fire Fighters of 9-11.



*SCFD Fire Explorer Post Advisor Brent Perkins (center) is the first SCFD employee to receive the Jerome Turner Community Service Award from the 100 Club of Memphis. Recognized for his efforts with the youth of Shelby County, he is seen here with his fellow honorees at the 2015 event.*

# Star of Life 2015 Award Recipients



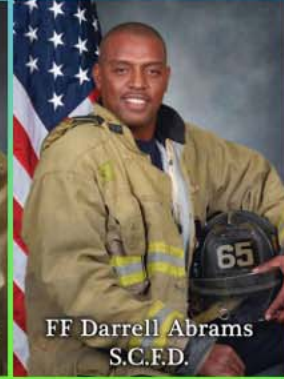
Lt. Danny Spry  
S.C.F.D.



Driver Derry Cook  
S.C.F.D.



Paramedic Todd Highfill  
S.C.F.D.



FF Darrell Abrams  
S.C.F.D.



FF Tammy Baskin  
S.C.F.D.



Lt. Jeremy Havlik  
S.C.F.D.



Driver Earl Laughlin  
S.C.F.D.



Paramedic Matt Doyle  
S.C.F.D.



FF Jamie Allen  
S.C.F.D.



## Responses Summation for Shelby County Fire Department during 2015

<b>Apparatus</b>	<b>Fire Calls</b>	<b>Medical</b>	<b>Total</b>
Batt 21	331	95	<b>426</b>
Batt 22	286	86	<b>372</b>
Brush Truck 61	80	29	<b>109</b>
Brush Truck 67	53	20	<b>73</b>
Brush Truck 68	51	4	<b>55</b>
Brush Truck 69	53	3	<b>56</b>
Engine 60	160	431	<b>591</b>
Engine 61	301	389	<b>690</b>
Engine 62	446	233	<b>679</b>
Engine 63	685	295	<b>980</b>
Engine 64	39	67	<b>106</b>
Engine 65	417	402	<b>819</b>
Rescue 66	268	370	<b>638</b>
Engine 67	144	456	<b>600</b>
Engine 68	133	254	<b>387</b>
Engine 69	170	328	<b>498</b>
MedSquad 2	183	1,270	<b>1,453</b>
Med Squad 5	189	1,191	<b>1,380</b>
Air Truck	5	n/a	<b>5</b>
HazMat1	16	5	<b>21</b>

**9,938**







**Bill McCammon**  
25 years



**Jeff Looney**  
26 Years



**Dale Burress**  
31 Years



**Joe Rea**  
35 Years



**Terry Davenport**  
39 Years



# SHELBY COUNTY FIRE

DUTY, HONOR, COURAGE

SINCE 1972

